



Enhance your experience, please visit madparis.fr

Extend your visit
by exploring our website (history, collections, database, documentary resources, etc.).

You can also visit
the Musée Nissim de Camondo
at 63 rue Monceau – 75008 Paris
Wednesday to Sunday from 10 am to 5.30 pm.

Discover and rediscover our collections and exhibitions with the solo (€40/year) or duo (€60/year) card and by taking part in one of our activities (guided tour, conference, workshop, event, etc.).

Browse the library collections
at 111 rue de Rivoli – 75001 Paris
Monday from 1 pm to 6 pm, and Tuesday to Thursday from 10 am to 6 pm.

Find publications by the museum
at the bookstore and gift shop
Tuesday to Sunday from 11 am to 6.30 pm
- open Thursday evenings until 9 pm.

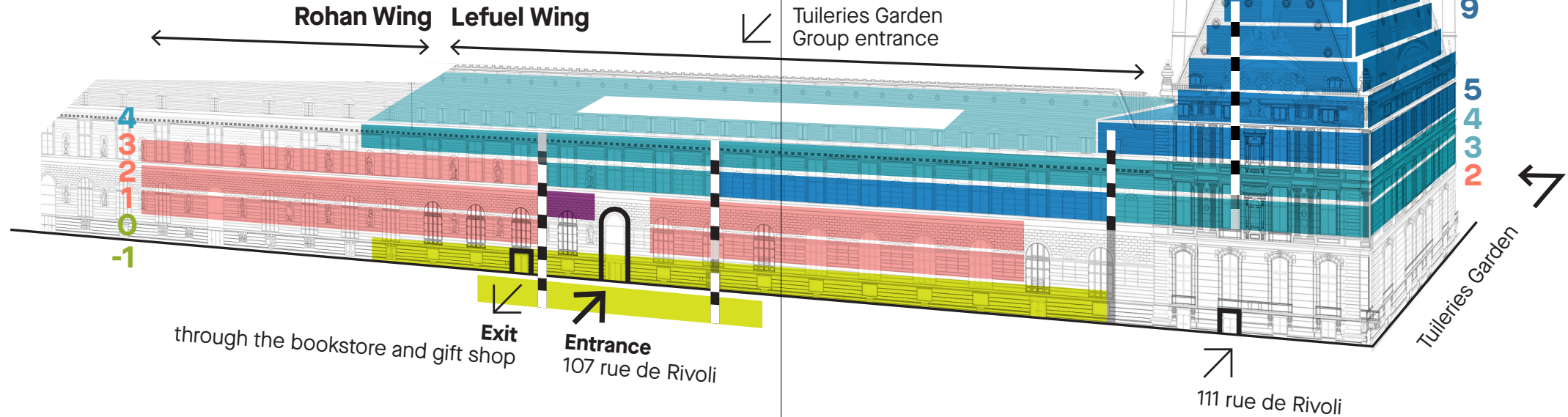
Support Les Arts Décoratifs
through different membership categories and help perpetuate the institution's work of inspiring and sharing with the public.

Follow us on social media



RECYCLE ME!

If you leave your booklet at the exit of the exhibition, it can be recycled or reused



Welcome to the Musée des Arts Décoratifs

Created in the 19th century as a source of inspiration for artists and craftspeople, the Musée des Arts Décoratifs (Museum of Decorative Arts) is home to one of the world's largest and finest collections of decorative art, with over one-and-a-half million artworks and artefacts.

Encompassing furniture, fine tableware, objets d'art, design, jewellery, glass, ceramics, Asian arts and more, the museum's collections are testament to a constant quest for harmony between beauty and utility.

Due to their fragility, not all the collections are permanently on display. Drawings, photographs, wallpaper, toys, fashion and textiles, graphic design and advertising are presented on an ad-hoc basis as part of exhibitions and hangings.

Set over seven floors with a selection of around 6,000 objects, the permanent itinerary invites you on a fascinating tour through eight centuries of creativity and innovation, the art of living, style and the history of taste.

Embark on a journey from the Middle Ages rooms to those celebrating Art Nouveau, which in turn open the doors to 20th and 21st century design.

Discover the period rooms, which immerse you in interiors from different eras.

Marvel at the jewellery gallery, which showcases 1,200 antique and contemporary pieces.

Enjoy your visit!

Explore the collections and exhibitions of the Musée des Arts Décoratifs with the free Bloomberg Connects app.



Scan here to download now.

Bloomberg Connects

MUSÉE DES ARTS DÉCORATIFS
107 rue de Rivoli – 75001 Paris
Booking at madparis.fr
Open Tuesday to Sunday from 11 am to 6 pm
Exhibitions open on Thursday evenings until 9 pm.
Closed on Monday.

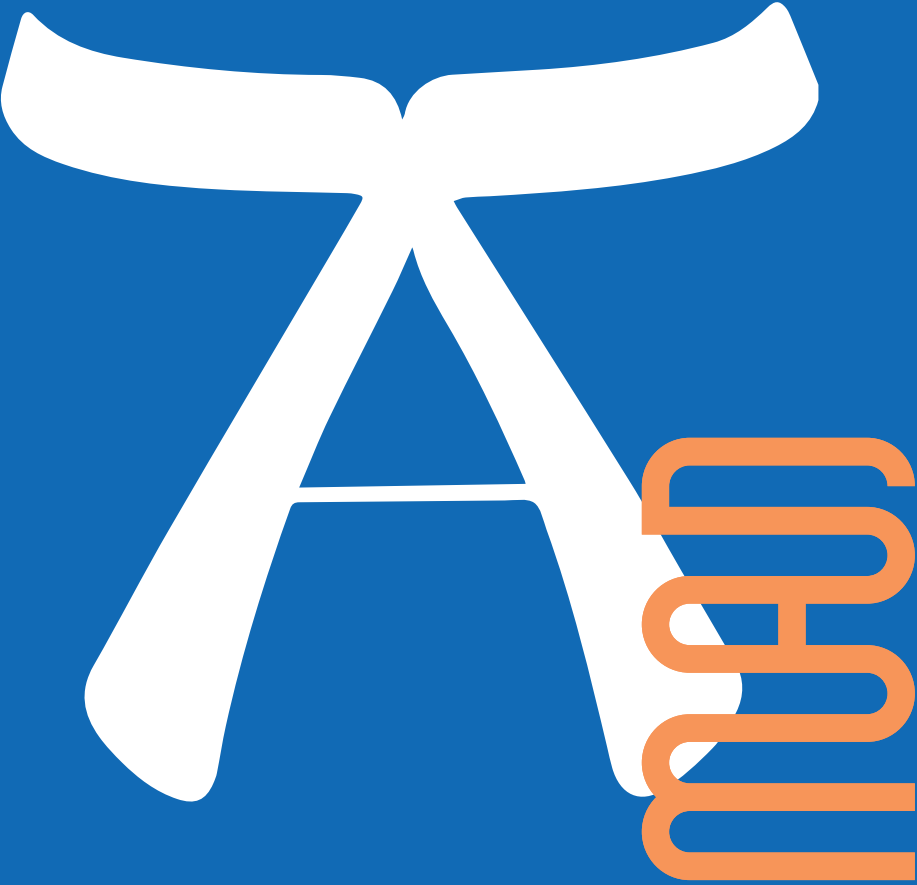


Recommended visiting time for the entire itinerary: 3 hours
Our teams are available to provide you with guidance and information.

museum PLAN



visitor itinerary



9

Modern
and contemporary collections

20th and 21st century design

65 Ceramic and glass : poetic materials

8

- 62 Jean Prouvé
- 63 Jean Dubuffet
- 64 Charlotte Perriand

7

- 59 The Library of Chairs
- 60 Roger Tallon
- 61 Elementary Forms

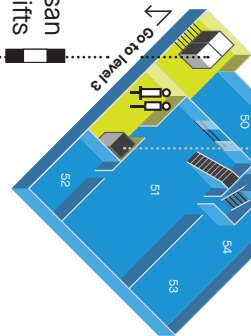
6

- 55 Avatars of the Vase
- 56 Jean Royère
- 57 Trajectories
- 58 Modern Children

5

- 50 Conscious Design
- 51 Dreams and Fantasies
- 52 Claude and François-Xavier Lalanne
- 53 Memphis
- 54 Dinner time!

Marsan
Lifts

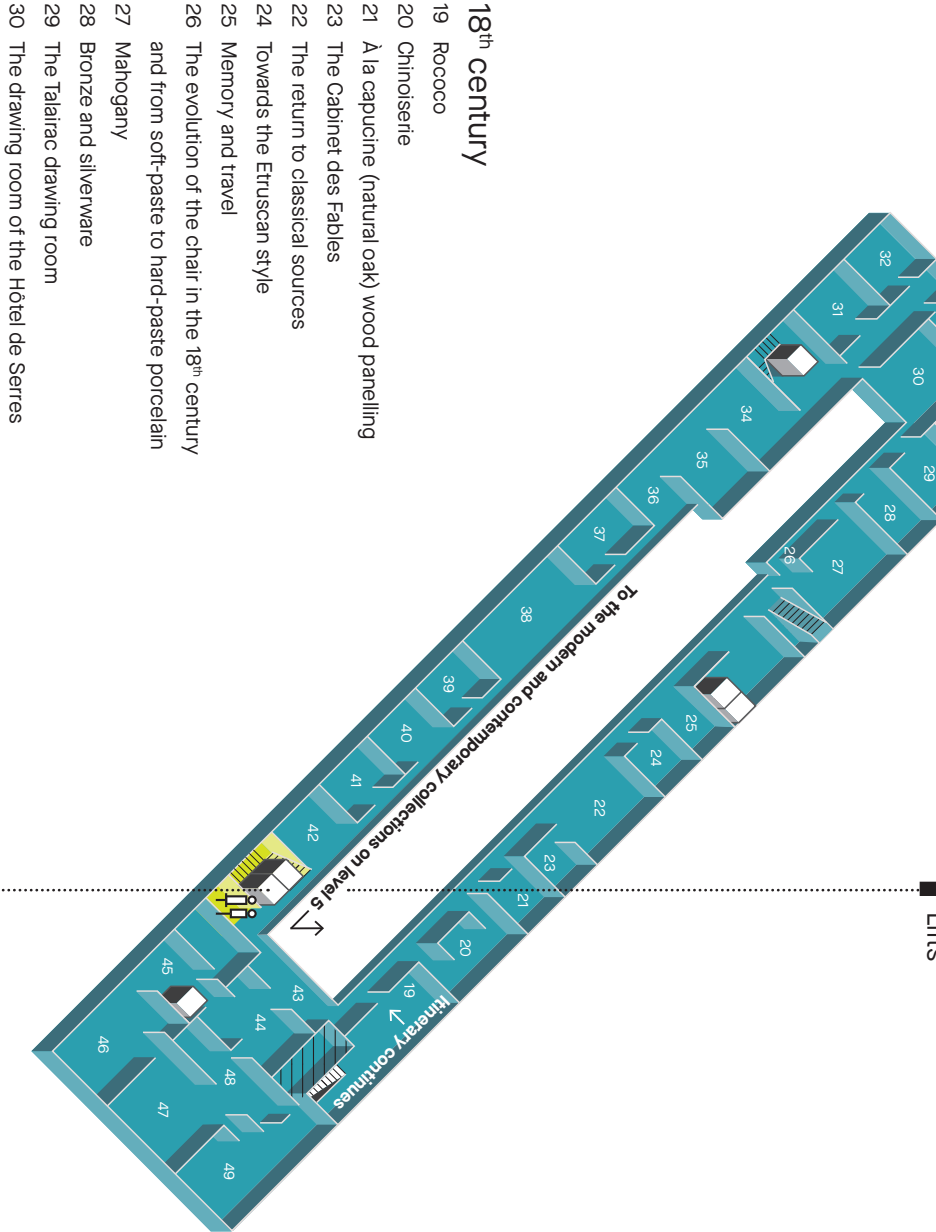


4

Historical collections

19th century - Art Nouveau

Fine tableware during the reign of Napoleon I



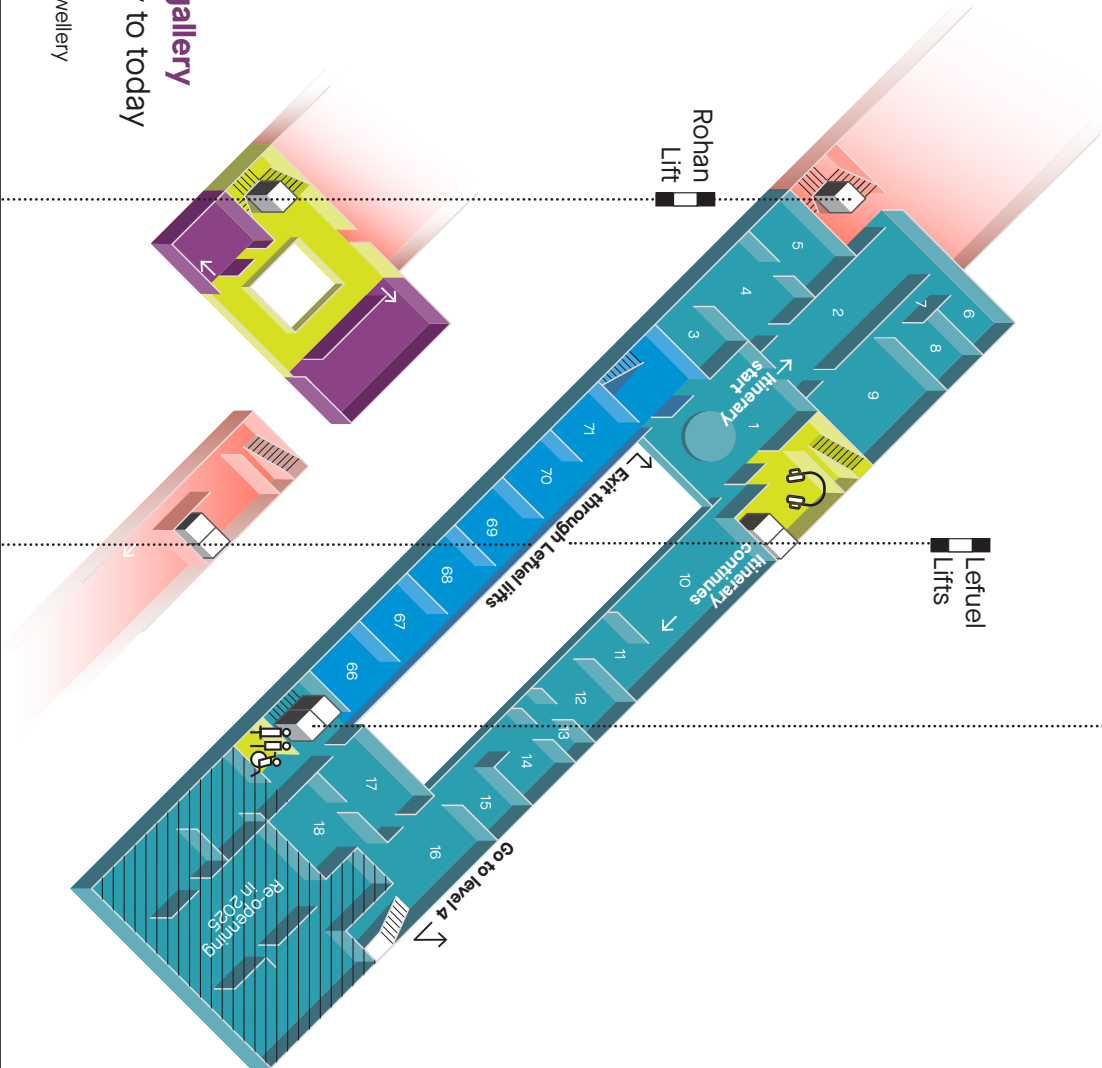
Marsan
Lifts

18th century

- 19 Rococo
- 20 Chinoiserie
- 21 À la capucine (natural oak) wood panelling
- 23 The Cabinet des Fables
- 22 The return to classical sources
- 24 Towards the Etruscan style
- 25 Memory and travel
- 26 The evolution of the chair in the 18th century and from soft-paste to hard-paste porcelain
- 27 Mahogany
- 28 Bronze and silverware
- 29 The Talairac drawing room
- 30 The drawing room of the Hôtel de Serres

3

Leftuel
Lifts

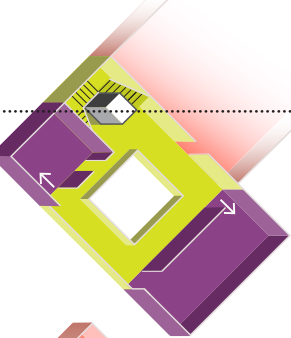


Historical collections

Middle Age - Renaissance

- 1 Introduction room
- 2 The altarpieces gallery
- 3 International Gothic
- 4 A bedroom
- 5 Friezes from the castle of Vézér Blanco
- 6 The early Italian Renaissance
- 7 Ceramics, glass and enamels from the 13th to the 16th century
- 8 The origins of cabinet-making: Intransia
- 9 The late Renaissance
- 17th to 18th century
- 10 The architectural vocabulary 1600-1700
- 11 Acanthus and scrolls
- 12 Arabesques and grotesques
- 13 Ceiling from the Hôtel de Verrùle
- 14 Adornments, carvings
- 15 A collector's study
- 16 Geometric parquetry (frisage)
- 17 The gilt study from the Hôtel de Rochegude
- 18 Hangings and upholstery
- Collections modernes et contemporaines
- 66 Steph Simon gallery
- 67 Italian Design
- 68 Ras le bol, ras le sol
- 69 A New Japan
- 70 Craftsman designer
- 71 Digital Humanism

2



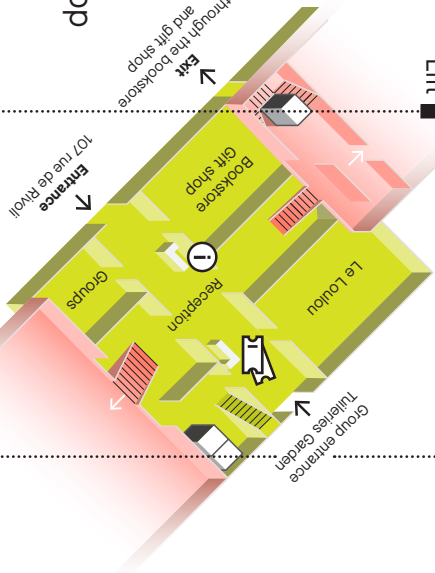
Jewellery gallery

15th century to today

- Antique jewellery
- Contemporary jewellery

1

Rohan
Lift



Leftuel
Lifts

0

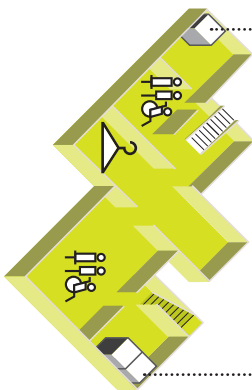
Reception

Definitive exit

- Bookstore-gift shop
- Le Loulou

-1

- Cloakrooms
- Toilets



For the comfort and accessibility of all, folding seats, wheelchairs, magnetic induction loops, baby carriers, and changing tables are available on level –1 near the cloakrooms.



Audioguides are available on level 3.



Please leave your backpacks, umbrellas and other bulky items in the cloakrooms. Animals (excluding those accompanying people recognised as disabled), food and drink are not allowed in the rooms. The works are fragile, please do not touch them and photograph them without flash.

Le musée des arts décoratifs



son histoire, ses collections



PLAN

museum
PLAN



visitor itinerary



PLAN